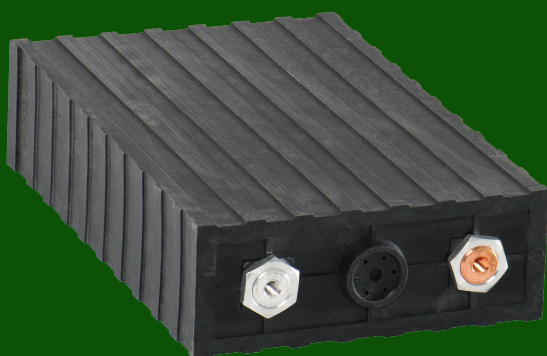
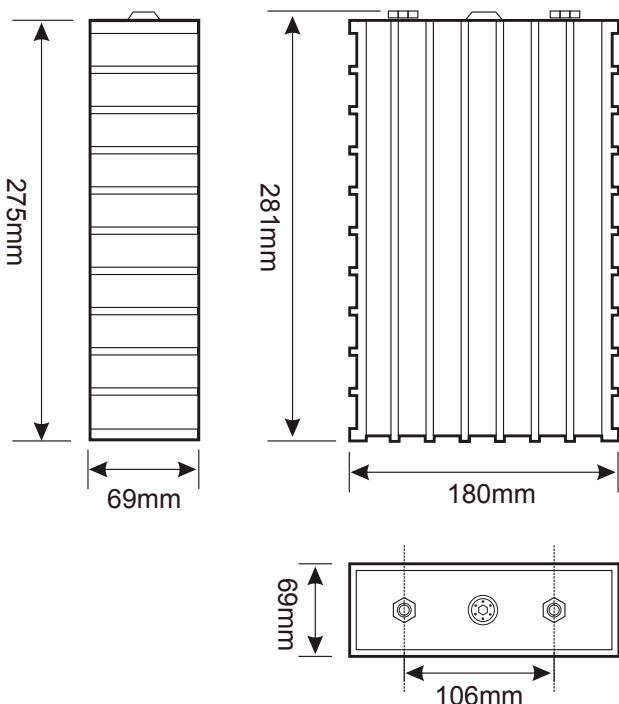


中聚锂电池性能说明 SINOPOLY LITHIUM ION BATTERY SPECIFICATIONS

单体电池尺寸 DIMENSIONS



型号(MODEL):SP-LFP180AHA



技术参数 SPECIFICATION

型号(MODEL):SP-LFP180AHA

标称容量 Nominal Capacity	180Ah,576Wh	
标称电压 Nominal Voltage	3.2V	
循环寿命 Life Cycles	80% DOD	≥2000Times
	70% DOD	≥3000Times
自放电率 Self-discharge Rate	≤3%	
重量 Weight	5.75±0.1kg	

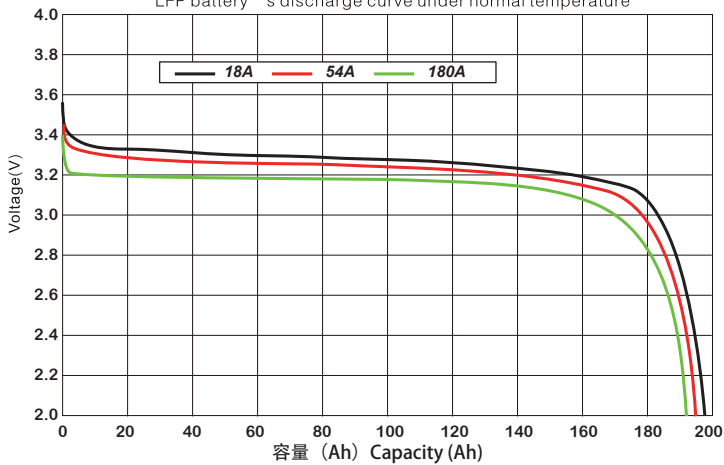
	充电 Charge (模式 Mode:cc-cv)	放电 Discharge
截止电压 Cut-Off Voltage	3.8V	2.8V
标准电流 Standard Current	0.3C,54A	0.3C,54A
最大恒电流 Max Constant Current	3C,540A	3C,540A
最大脉冲电流(10秒) Max Impulse Current (10s)	3C,540A	5C,900A
工作温度 Operating Temperature	0°C ~ +70°C	-20°C ~ +70°C

SP-LFP180AHA型电池的充放电特性

SP-LFP180AHA CHARGE & DISCHARGE CHART

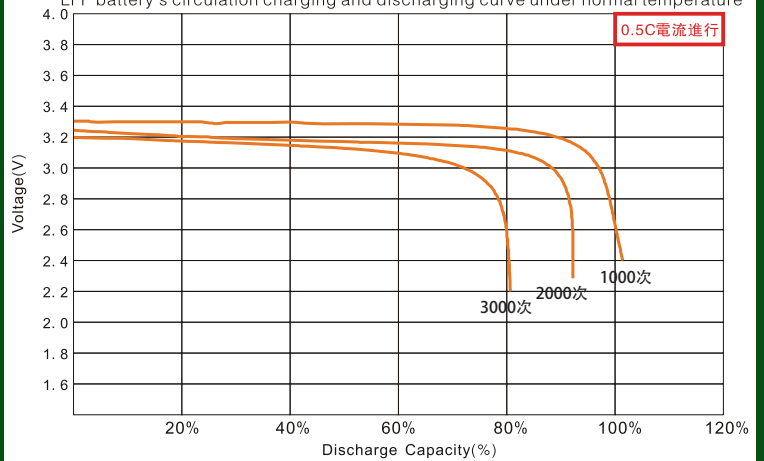
常温下 LFP类电池的放电特性曲线

LFP battery's discharge curve under normal temperature



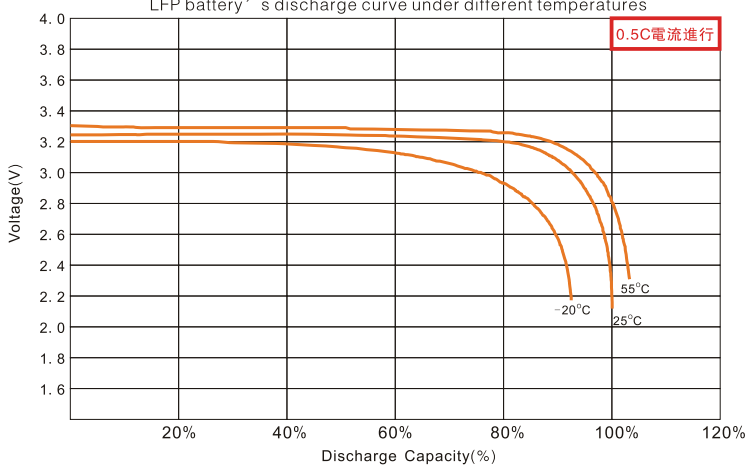
常温下 LFP类电池的循环充放电特性曲线

LFP battery's circulation charging and discharging curve under normal temperature



不同环境温度下 LFP类电池的放电特性曲线

LFP battery's discharge curve under different temperatures



在常温境温下LFP类电池的存储特性曲线

LFP battery's storage characteristic curve in normal temperature

